

SPM Flex Chemcassette[®] Tape-Based Gas Detector

Honeywell



Improving safety and productivity with the most flexible, user-friendly tape-based gas detector for low-level toxics

SPM Flex Gas Detector



feel **more confident** than **ever** in your plant's **safety and uptime**

In your critical operations, where disruptions can cost millions of dollars, do you have the right instrument for your toxic gas monitoring system? One that your workers feel confident using? One that provides the gas intelligence you need?

With our all-new SPM Flex, you never have to worry whether your single-point monitor will stand up to harsh conditions, whether a false alarm will lead to a costly shutdown, or whether your workers will be able to correctly operate the device.

Instead, you can count on our Chemcassette® tape-based SPM Flex for unmatched accuracy, flexibility and ease of use — even in challenging environments. So you can rest assured that you're keeping your people safe and your operations running.



SPM Flex Gas Detector



Flexible uses throughout your plant

Thanks to its robust design and intuitive operation, the SPM Flex can perform a variety of roles:

- **Emergency response.** When your emergency response team needs to respond quickly, the SPM Flex is the best tool for the job. With fast startup, easy operation in hazmat gear and rugged design, the SPM Flex is ready when you are.



- **Life safety.** The SPM Flex, capable of working as both a fixed and a portable unit, is an important addition to your toxic gas monitoring system. Use it to investigate suspected leaks, or, if you have a monitoring point that's out of service, use the SPM Flex to replace it — with the option to plug it in or use the long-lasting battery.



- **Tool maintenance.** When your crews need to perform maintenance on a process tool, they can take the SPM Flex with them to ensure safety while they work. With full data logging and an industry leading gas selection, you'll always have the assurance that your staff is safe every day, all day.



SPM Flex Gas Detector



advanced capabilities — no expertise required

Your workers may not use the SPM Flex every day, but when they need it, they'll be able to operate it with confidence. That's because this highly automated single-point monitor is intuitive, easy to use, and designed to fit the unique needs of your operation.

Easy to get up and going

- **Easy to choose the target gas.** Want to monitor for a certain gas? Just turn on the SPM Flex, snap in the proper Chemcassette[®] tape, and use the intuitive LCD menu to select the gas from the list. Need to monitor for a gas in a different family? Just swap out the Chemcassette tape and choose the new gas. No ChemKeys[™] required.
- **Quick start-up for emergency response.** The SPM Flex gets up and running in under two minutes — so your response team can quickly gear up and go to the site.
- **Easy to use with protective equipment or hazmat gear.** Purpose-built with the user experience in mind, the SPM Flex is easy to carry, operate and read — even when you're wearing a hazmat suit or other protective gear. The monitor has large, chunky buttons that are easy to use. And when you carry the SPM Flex, the display faces up so it's easy to read.



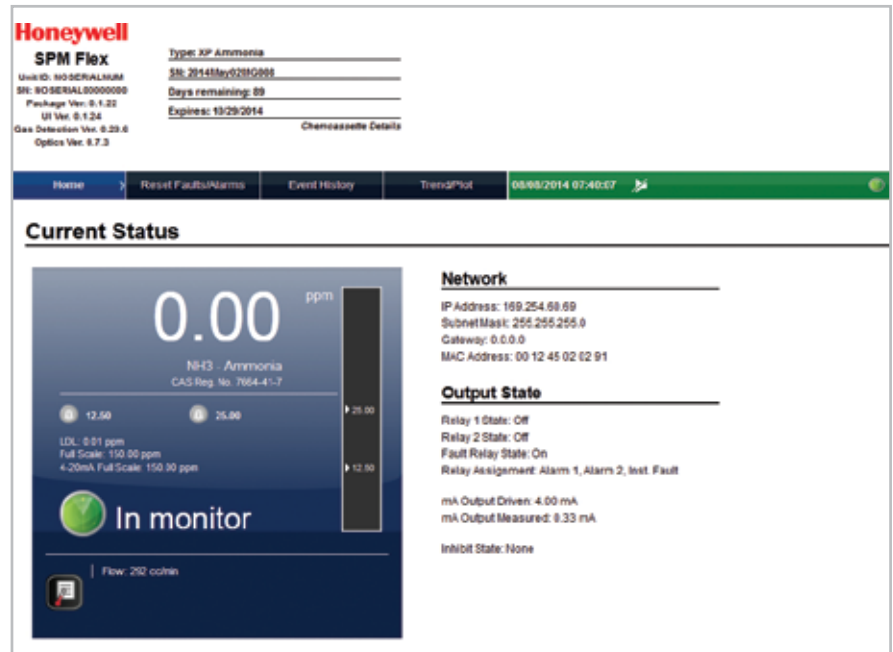
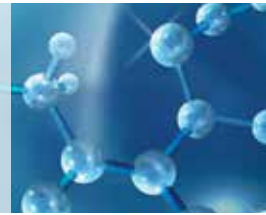
Extreme Accuracy for Extreme Gases

The SPM Flex, the next evolution of our SPM and TLD gas detectors with Chemcassette tape technology, is capable of working as both a fixed and a portable unit. The monitor detects the ultrasensitive gases inherent in your operations, including:

- Hydrides
- Mineral acids
- Oxidizers
- Amines

Our Chemcassette tape technology shows the presence of gas — quickly and definitively with a physical record. So you can prevent costly downtime from false alarms.

SPM Flex Gas Detector



Crisp, clear visibility — from near and far

- **Visible at a distance.** Thanks to a crisp display and a color-coded LED bar on top of the SPM Flex, you can see alarm status, gas concentration and other data easily from a distance. So even if you're not right next to your SPM Flex, you always know the health of your unit and the safety of your area.
- **Remote viewing through the web.** Your visibility even extends to other rooms and buildings, thanks to the unit's web capabilities. Simply plug an Ethernet cable into the SPM Flex, and use the easy-to-read web interface to see the status of the unit — no matter where you are.

SPM Flex: Ready when you are.
Quick start. User-friendly.
Flexible application.



SPM Flex Gas Detector



rugged and
reliable



Stands up to harsh conditions. Working in the sun and rain, around blasts of steam, or other challenging environmental conditions? The SPM Flex goes where you do, standing up to changes in temperature and humidity without compromising accuracy.

It also works well in cleanrooms, thanks to its Teflon coating that doesn't attract dust. And if it's ever exposed to toxic gas or caustic liquid, just hose it down or use a decontamination wipe.

SPM Flex Gas Detector



Data logging and information management for total confidence

- **Access to detailed history.** With the SPM Flex, you can rest assured that every monitoring moment is being recorded — and ready for analysis whenever you need it. Whether you want to report a gas incident or investigate a trend, the monitor keeps up to a three-month history of gas concentrations, alarms, tape changes and other factors. Plus, you have the option to view this data through a web server, or you can easily download it to a USB drive.
- **Easy to adjust configurations.** Need to change the detection limit for a gas? Alter the parameters for latching alarms? Just adjust your settings with the intuitive menu — then use the USB port to download and transfer them to other units. So it's a snap to deploy multiple monitors with a consistent configuration.

Designed to the highest standard of reliability

- **Easy maintenance and long-lasting battery.**
The SPM Flex has easily serviceable parts and a reliable battery, so you can count on long-lasting portable use — and an affordable cost of ownership. Even more, if the SPM Flex is plugged in and you lose power, the internal battery kicks in as backup so the unit keeps monitoring.

- **All backed by the history and reputation of Honeywell Analytics.** With the SPM Flex, like other products from Honeywell Analytics, you can have peace of mind from knowing your gas detection equipment is engineered to the highest standard of safety and reliability. We honor the investment you've made, and we're here to support you, giving you complete confidence in your facility's gas safety, compliance and uptime.



upgrade to a new standard
of ease, flexibility and gas intelligence

With the SPM Flex, it's never been easier to keep your people safe and your operations running.

Contact us at 800-538-0363 or email detectgas@honeywell.com to experience the next generation of Chemcassette® gas detection.

Honeywell Analytics Gas Detection Offerings

Honeywell Analytics gas detectors protect people, assets and environment from toxic and combustible gas hazards, helping to create safer, more comfortable, secure and productive environments. Our strength derives from Honeywell's leadership in sensor technology; in fact Honeywell operates four sensor manufacturing plants, supplying an entire industry with its core detective element.



Commercial

Gas detection from standalone units to fully engineered, multi-point systems, all offering cost-effective regulatory compliance.

- » Applications: parking structures, chillers, mechanical rooms, office towers, commercial buildings, shopping centers, swimming pools, golf courses, schools and universities, laboratories

Industrial

Renowned Sieger and Manning gas detection systems with advanced electrochemical, infrared and open path sensing technologies.

- » Applications: oil and gas, cold storage, water/wastewater treatment, chemicals, engine rooms, plastics and fibers, agriculture, printing and light industrial

Portables

Single or multi-gas detectors ranging from compact, lightweight designs for personal protection to systems-based, networkable instrumentation for industrial hygiene.

- » Applications: underground utility and electricity ducts, boiler rooms, post-fire sites, sewers, industrial plants, industrial hygiene, first responder teams, remote fleets

Customer business centre

Korea

#701 Kolon Science Valley (1)
43 Digital-Ro 34-Gil, Guro-Gu
Seoul 152-729

Korea

Tel: +82 (0)2 6909 0300

Fax: +82 (0)2 2025 0329

Analytics.ap@honeywell.com

Singapore

Level 1, Honeywell Building,
17 Changi Business Park Central 1
Singapore 486073

Tel: +65-65803776

Fax: +65-65803663

Australia

Unit 1B, 69 Dalton Road
Thomastown, Victoria 3074

Tel: +61-3-94642770

Fax: +61-3-94642772

Taiwan

5F-10, No.81, Shui Li Road
Hsin Chu, Taiwan

Tel: +886-3-5169284

Fax: +886-3-5169339



High Tech/Government

Reliable gas and chemical detection including infrared spectroscopy (MST) with no cross interference, to Chemcassette paper-based solutions (MDA Scientific) offering detection down to parts per billion.

- » Applications: semiconductor manufacturing, aerospace propulsion, specialty chemicals industry, research laboratories, emergency response

Technical Services

24/7 global network includes post-sales service and Systems Integration teams.

- » Emergency call out, service contracts, on/off-site repair, training and commissioning
- » Complete range of spares, consumables and accessories

Technical Services

AP: ha.ap.service@honeywell.com

EMEA: ha.emea.service@honeywell.com

US: ha.us.service@honeywell.com

Please Note:

While every effort has been made to ensure accuracy in this publication, no responsibility can be accepted for errors or omissions. Data may change, as well as legislation, and you are strongly advised to obtain copies of the most recently issued regulations, standards, and guidelines. This publication is not intended to form the basis of a contract.